

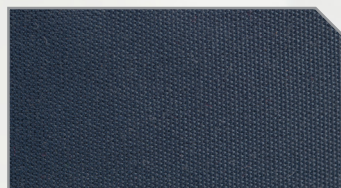


S M O K Y M O U N T A I N

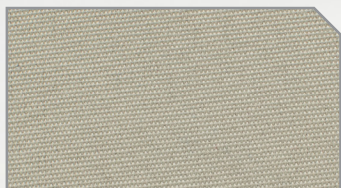
The Shibata pays homage to a sleepy town in Niigata Prefecture, Japan where miles of swaying grains are met with a distant mountain range on one side, and a harsh, typhoon-impacted coastline on the other. The bag accommodates a mounted pro body, or prosumer cameras with a spare lens or two.



C O L O R S



Midnight Navy



Silver Sage



Olive Green

f-stop

P R O D U C T F E A T U R E S

Classic Style: A vintage canvas look crafted from tough yet supple polyester and genuine leather accents.

Reliable Protection: Ample padding and weather resistant fabrics help protect your gear in the field.

Organized Storage: Two external pockets and pen slot, tablet sleeve, and padded main

Easy Access: Side release buckles on protective cover flap offer fast, one-handed access.

Versatile: Padded camera insert can be removed for everyday use.

Comfort: Two-inch padded nylon webbing shoulder strap.

Fits: Pro/prosumer SLR body and two lenses, or mounted body and one lens.



T E C H N I C A L D E T A I L S

Volume: 8694 cm³ (8.7 L)

Dimensions (cm): 12 Depth x 31.5 Width x 23 Tall

Weight: 0.53kgs (1.15lbs)

Stitching: Heavy-duty, Industrial cross stitching



www.fstopgear.com



SMOKY MOUNTAIN



FRONT

f-stop

WORKBOOK DETAILS

1. Easy access to top compartment for personal artifacts
2. Genuine leather details
3. Poly Spun yarn gives outer shell a soft touch and vintage look
4. Zipper access to main camera compartment
5. Nylon webbing
6. Reinforced nylon webbing handle
7. Padded shoulder straps
8. Inside zipper pocket for accessories
9. Adjustable/removable foam padding
10. Fits up to three lens and bodies (depending on lens choice)
11. Close-up of padded shoulder strap and Poly Spun yarn
12. Unique split-level design separates your camera gear and personal artifacts



www.fstopgear.com



SMOKY MOUNTAIN



SIDE

f-stop

WORKBOOK DETAILS

1. Easy access to top compartment for personal artifacts
2. Genuine leather details
3. Poly Spun yarn gives outer shell a soft touch and vintage look
4. Zipper access to main camera compartment
5. Nylon webbing
6. Reinforced nylon webbing handle
7. Padded shoulder straps
8. Inside zipper pocket for accessories
9. Adjustable/removable foam padding
10. Fits up to three lens and bodies (depending on lens choice)
11. Close-up of padded shoulder strap and Poly Spun yarn
12. Unique split-level design separates your camera gear and personal artifacts



www.fstopgear.com



S M O K Y M O U N T A I N



B A C K

f-stop

W O R K B O O K D E T A I L S

1. Easy access to top compartment for personal artifacts
2. Genuine leather details
3. Poly Spun yarn gives outer shell a soft touch and vintage look
4. Zipper access to main camera compartment
5. Nylon webbing
6. Reinforced nylon webbing handle
7. Padded shoulder straps
8. Inside zipper pocket for accessories
9. Adjustable/removable foam padding
10. Fits up to three lens and bodies (depending on lens choice)
11. Close-up of padded shoulder strap and Poly Spun yarn
12. Unique split-level design separates your camera gear and personal artifacts



www.fstopgear.com



SMOKY MOUNTAIN



OPEN

f-stop

WORKBOOK DETAILS

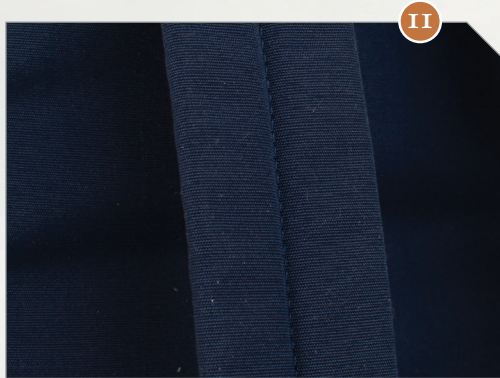
1. Easy access to top compartment for personal artifacts
2. Genuine leather details
3. Poly Spun yarn gives outer shell a soft touch and vintage look
4. Zipper access to main camera compartment
5. Nylon webbing
6. Reinforced nylon webbing handle
7. Padded shoulder straps
8. Inside zipper pocket for accessories
9. Adjustable/removable foam padding
10. Fits up to three lens and bodies (depending on lens choice)
11. Close-up of padded shoulder strap and Poly Spun yarn
12. Unique split-level design separates your camera gear and personal artifacts



www.fstopgear.com



SMOKY MOUNTAIN



PRODUCT DETAILS

f-stop

WORKBOOK DETAILS

1. Easy access to top compartment for personal artifacts
2. Genuine leather details
3. Poly Spun yarn gives outer shell a soft touch and vintage look
4. Zipper access to main camera compartment
5. Nylon webbing
6. Reinforced nylon webbing handle
7. Padded shoulder straps
8. Inside zipper pocket for accessories
9. Adjustable/removable foam padding
- IO. Fits up to three lens and bodies (depending on lens choice)
- II. Close-up of padded shoulder strap and Poly Spun yarn
- I2. Unique split-level design separates your camera gear and personal artifacts

www.fstopgear.com

