

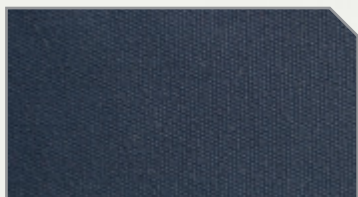


SPRINGFIELD

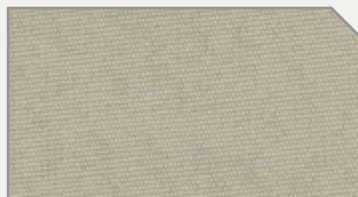
Fashionable, versatile and fast access- the Springfield can be carried as a sling or around the waist and provides immediate access to a body and mounted lens plus an extra lens.



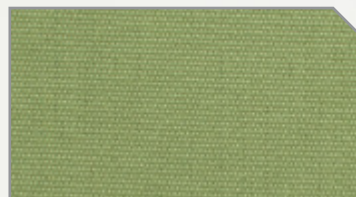
COLORS



Midnight Navy



Silver Sage



Olive Green

f-stop

PRODUCT FEATURES

Classic Style: A vintage canvas look crafted from tough yet supple polyester and genuine leather accents

Reliable Protection: Ample padding and weather resistant fabrics help protect your gear in the field

Organized Storage: Multiple external pockets and padded main compartment with a moveable divider

Easy Access: Side release buckle on protective cover flap offers fast, one-handed access

Versatile: Padded camera insert can be removed for everyday use

Comfort: Can be carried as a sling or around the waist as a hip-pack

Fits: Pro/prosumer, gripped, SLR body and one lens



TECHNICAL DETAILS

Volume: 8694 cm³ (8.7 L)

Dimensions (cm): 13 Depth x 33 Width x 24 Height

Weight: 0.47kgs (1.04lbs)

Stitching: Heavy-duty, Industrial cross stitching

www.fstopgear.com



SPRINGFIELD



FRONT

f-stop

WORKBOOK DETAILS

1. Reinforced nylon webbing handle
2. Easy access front pocket
3. Genuine leather details
4. Side release YKK® buckle on protective cover flap offers fast, one-handed access.
5. Poly Spun yarn gives outer shell a soft touch and vintage look
6. Two side accessory pockets
7. Nylon webbing
8. Adjustable/removable foam padding
9. Fits up to a pro/prosumer, gripped, SLR body and one lens
10. Can be carried as a sling or around the waist as a hip-pack



SPRINGFIELD



SIDE

f-stop

WORKBOOK DETAILS

1. Reinforced nylon webbing handle
2. Easy access front pocket
3. Genuine leather details
4. Side release YKK® buckle on protective cover flap offers fast, one-handed access.
5. Poly Spun yarn gives outer shell a soft touch and vintage look
6. Two side accessory pockets
7. Nylon webbing
8. Adjustable/removable foam padding
9. Fits up to a pro/prosumer, gripped, SLR body and one lens
10. Can be carried as a sling or around the waist as a hip-pack



SPRINGFIELD



BACK

f-stop

WORKBOOK DETAILS

1. Reinforced nylon webbing handle
2. Easy access front pocket
3. Genuine leather details
4. Side release YKK® buckle on protective cover flap offers fast, one-handed access.
5. Poly Spun yarn gives outer shell a soft touch and vintage look
6. Two side accessory pockets
7. Nylon webbing
8. Adjustable/removable foam padding
9. Fits up to a pro/prosumer, gripped, SLR body and one lens
10. Can be carried as a sling or around the waist as a hip-pack



SPRINGFIELD



OPEN

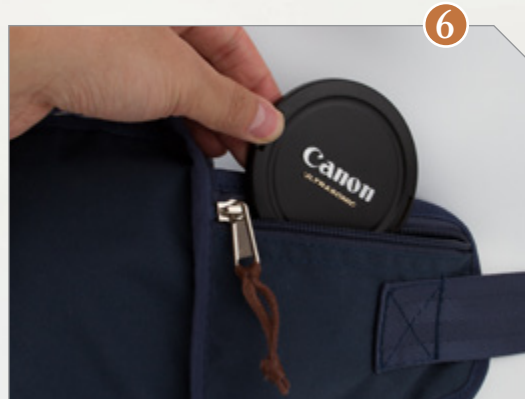
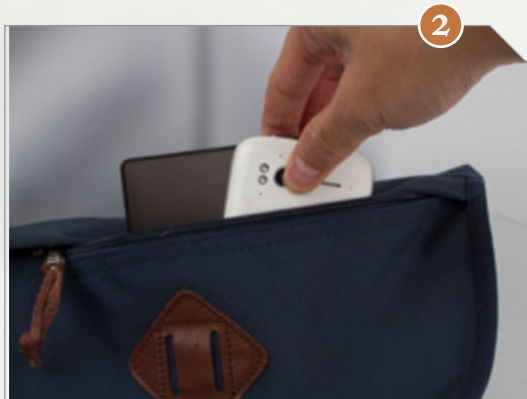
f-stop

WORKBOOK DETAILS

1. Reinforced nylon webbing handle
2. Easy access front pocket
3. Genuine leather details
4. Side release YKK® buckle on protective cover flap offers fast, one-handed access.
5. Poly Spun yarn gives outer shell a soft touch and vintage look
6. Two side accessory pockets
7. Nylon webbing
8. Adjustable/removable foam padding
9. Fits up to a pro/prosumer, gripped, SLR body and one lens
10. Can be carried as a sling or around the waist as a hip-pack



SPRINGFIELD



PRODUCT DETAILS

f-stop

WORKBOOK DETAILS

1. Reinforced nylon webbing handle
2. Easy access front pocket
3. Genuine leather details
4. Side release YKK® buckle on protective cover flap offers fast, one-handed access.
5. Poly Spun yarn gives outer shell a soft touch and vintage look
6. Two side accessory pockets
7. Nylon webbing
8. Adjustable/removable foam padding
9. Fits up to a pro/prosumer, gripped, SLR body and one lens
10. Can be carried as a sling or around the waist as a hip-pack