



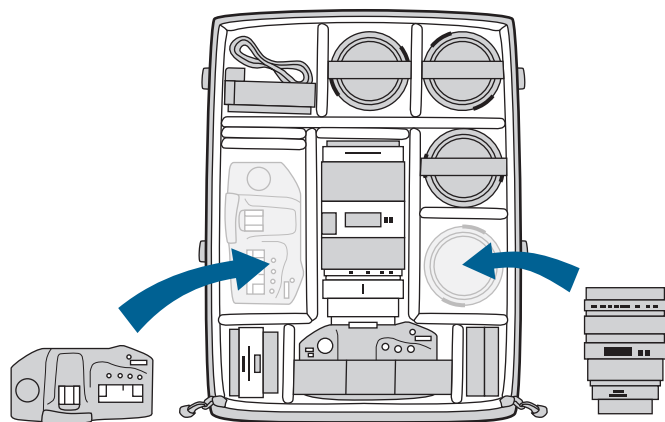
# EASY AS 1 2 3

f-stop partners technical carry solutions with modular gear organization allowing you to customize what and how you carry your equipment and personal items.

# f-stop

## 1 SECURE

The first step in building your f-stop Mountain Series system, is to layout your photo gear and select an ICU that best fits your kit. Once selected, secure your gear within.



Each ICU includes foam dividers that can be removed and adjusted to accommodate each photographer's specific gear.

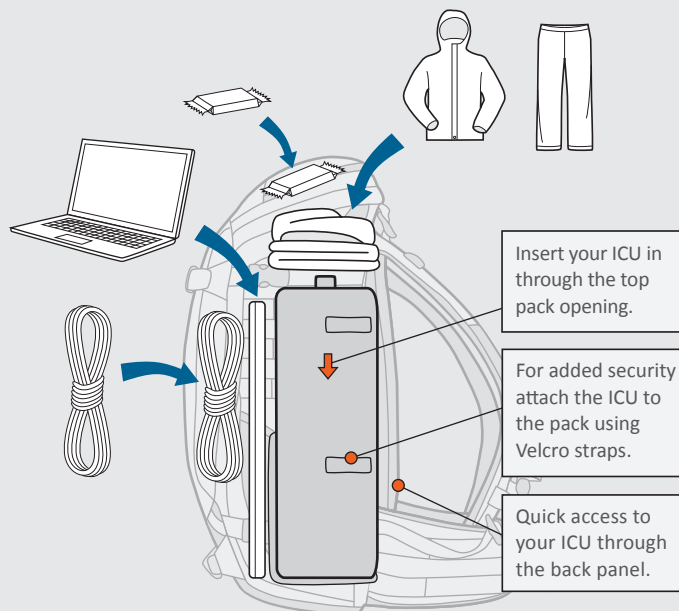
### INTERNAL CAMERA UNITS



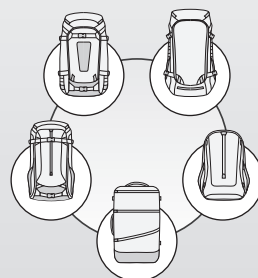
The wide range of ICUs available gives each individual the ability to customize their set up around their specific needs - finding that perfect balance of camera gear and personal items.

## 2 PACK

Once your ICU is secured, select a Mountain Series shell that best suits the amount and type of gear that you need to carry.



### MULTIPLE PACKS



The modular system allows you to balance the amount of camera, non-camera and technical mountain gear that you need for your trip. With 5 unique packs in the Mountain Series, f-stop provides a carry solution for any type of trip or adventure.

## 3 SHOOT

With your gear secured and your pack at the ready, it's time put it on your back and go. The functionality of the system and ease it provides in getting your gear to location will allow you to focus on the task at hand - getting the shot.



### COMBINATIONS

Not all trips or travel are created equal. Different adventures will require different gear set ups. The f-stop system, with its multiple ICU options and variety of Mountain Series pack sizes and configurations, is designed to give you that freedom.